

**CHAMPION<sup>®</sup>**



5-25 HP | RECIPROCATING AIR COMPRESSORS

# Advantage





★★★★★

**QUICK SHIP\***  
COMPRESSORS

AVAILABLE FOR  
*Immediate  
Shipment*

Downtime is NOT an option

Champion has the solution

# Fully-Equipped Packages Available Immediately

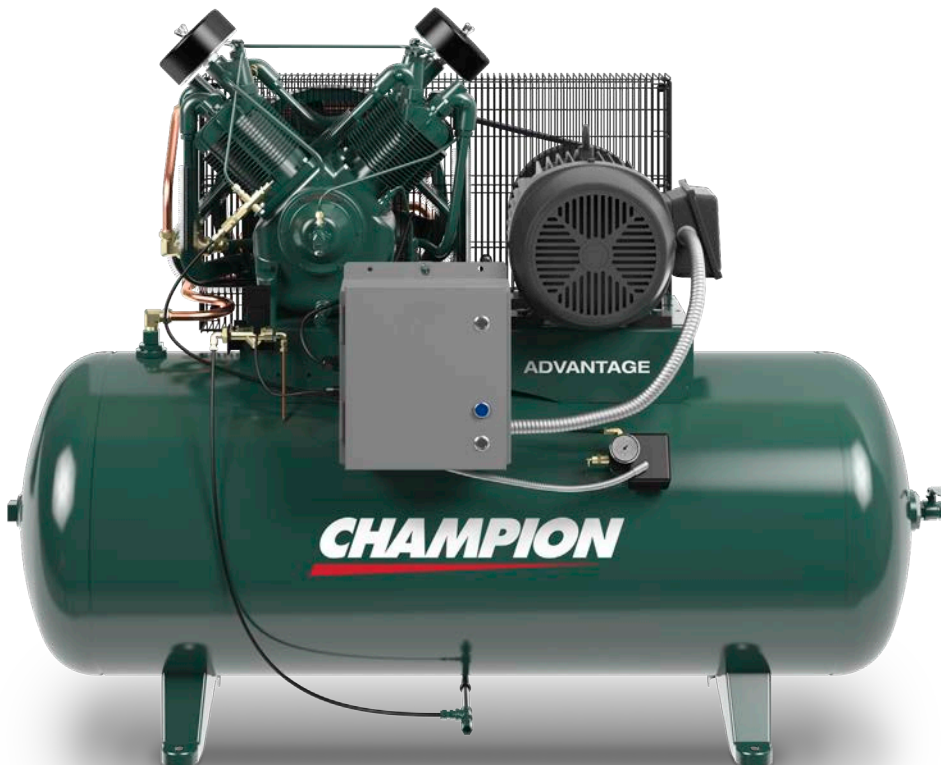
## A Winning Combination

Champion compressors are proven units, known for their reliability over decades of use. We know our products and understand how they operate in many different operating environments. No matter the application, Champion gets the job done.

The Advantage Program features fully-equipped compressor packages that are available for immediate shipment.

## We Provide the Total Package

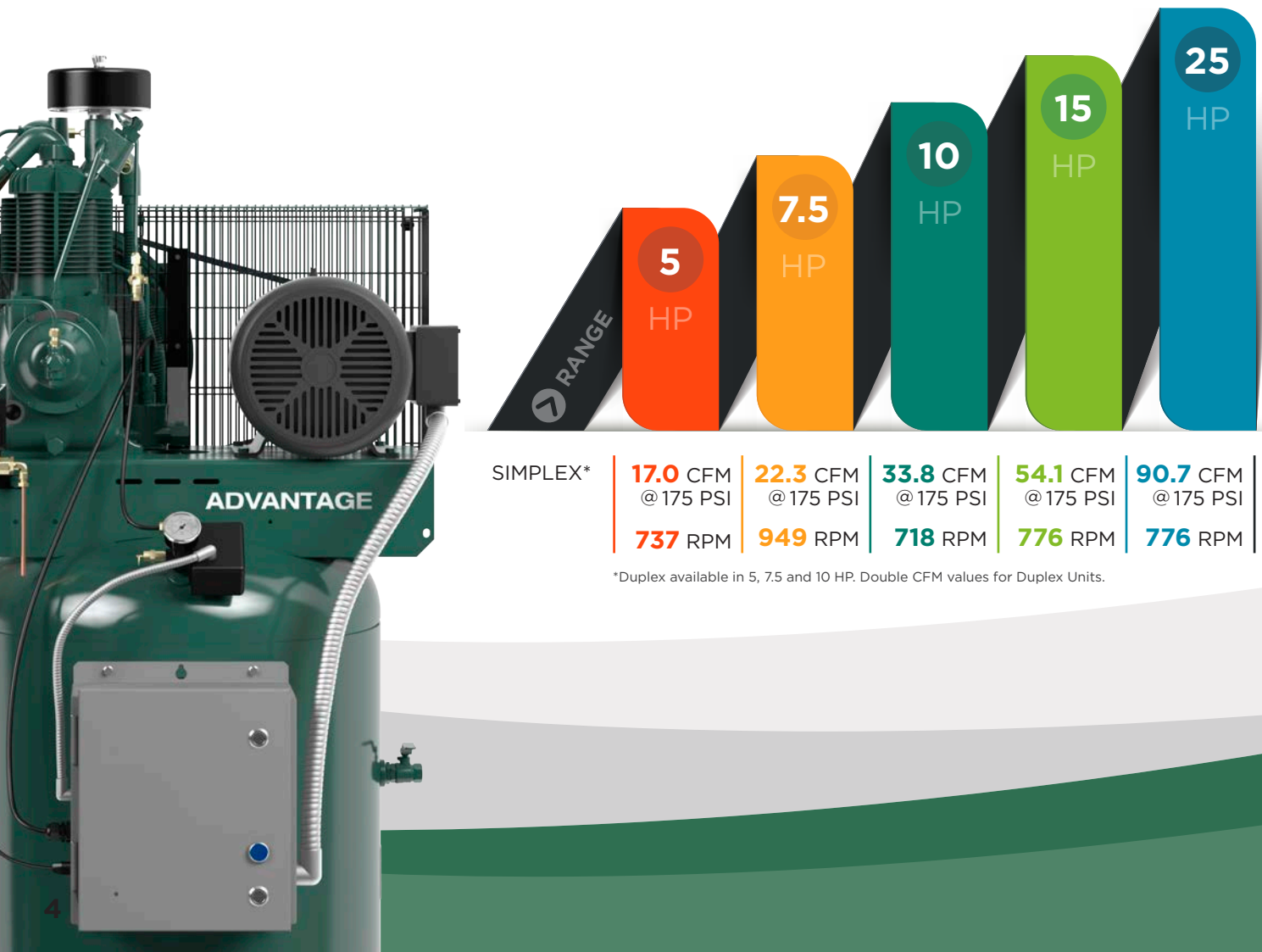
Premium accessories on a superior performing compressor—saves you time and protects your investment.



\*Immediate shipment subject to unit availability.

# Advantage Standard Features

- Heavy Duty Two-Stage, Splash-Lubricated Air Compressor Pump(s)
- Multi-Finned Cylinders and Head
- Integral Cylinder Head
- Intercoolers for Cooling Between Stages
- Reliable High Flow Disc Valves
- Tapered Roller Main Bearings
- Balanced Crankshaft
- Oil-Level Site Glass
- Centrifugal Unloader for Loadless Starting
- 0-300 PSIG Air Pressure Gauge
- Factory Fill with ChampLub Lubricants
- Vertical or Horizontal Configurations
- ASME Code Air Receiver
  - Pressure Relief Valve
  - Service Valve
  - Drain Valve
  - Pressure Gauge
- Oversized Inlet Filter
- Mounted Control Panel
- Electric Timed Drain
- Air-Cooled Aftercooler (select models)
- Vibration Isolators
- Low-Oil Stop Control



SIMPLEX\*

|                    |                    |                    |                    |                    |
|--------------------|--------------------|--------------------|--------------------|--------------------|
| 17.0 CFM @ 175 PSI | 22.3 CFM @ 175 PSI | 33.8 CFM @ 175 PSI | 54.1 CFM @ 175 PSI | 90.7 CFM @ 175 PSI |
| 737 RPM            | 949 RPM            | 718 RPM            | 776 RPM            | 776 RPM            |

\*Duplex available in 5, 7.5 and 10 HP. Double CFM values for Duplex Units.

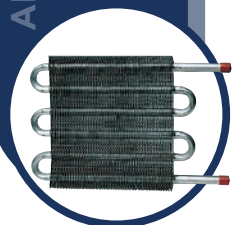
ISOLATOR PADS



Vibration  
Isolator Pads

Isolates the compressor unit from the foundation or floor. Reduces noise and protects the unit from out-of-level floor situation that could cause vibration and damage.

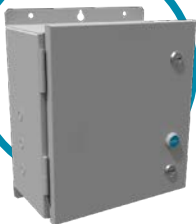
AIR-COOLED



Air-Cooled  
Aftercooler

The factory mounted, heavy duty, air-cooled aftercooler effectively removes up to 65% of the moisture from discharged compressed air.

CONTROLS



Control Panel

Provides thermal overload protection, and transformer provides reliable low voltage output to the auxiliary components. May be mounted or unmounted.

TANK DRAIN



Automatic  
Tank Drain

Ant adjustable electric timed drain automatically discharges moisture from the receiver.

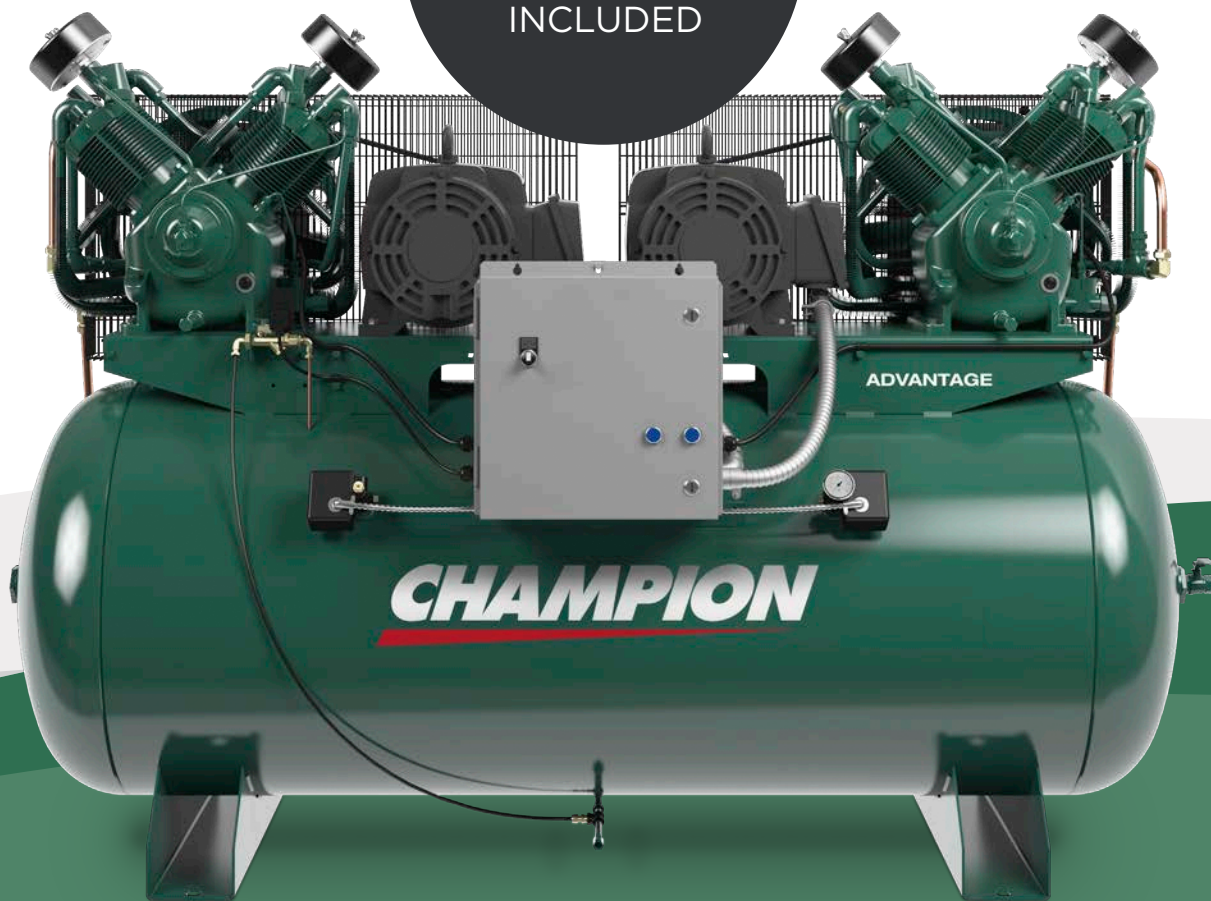
LOW OIL MONITOR



Low-Oil  
Stop Control

Low-oil stop control shuts down the unit when oil levels are below an adequate level. Prevents the unit from restarting until oil level has been restored.

CHAMPION  
PREMIUM  
ACCESSORIES  
INCLUDED



# Convenience & Peace of Mind



## Standard Warranty

The standard warranty covers parts and labor on the package components for one year and three years on the compressor pump.



The Champion philosophy ensures long-lasting, reliable equipment. Our warranty program demonstrates our confidence in our products. Each new Champion assembled unit has a 3 year warranty on the compressor pump against defects in materials of workmanship under normal use and service.

\*See standard warranty form BU-32 for complete standard warranty details.

## Premium Extended Warranty

Purchase a Premium Warranty Kit at the same time as your new Champion compressor package to receive extended warranty protection. This offer will double the coverage with an additional 3 years of warranty on the compressor pump (parts & labor) providing 6 YEARS of worry free coverage. The Premium Extended Warranty also provides an extra 12 months coverage on the package for a total of 24 months. See Premium Warranty form BU-28 for complete extended warranty details.

- Premium Warranty kit has all necessary service items (oil & filters) for 6 years of annual maintenance.
- Duplex machines require two kits, one for each pump.
- The use of approved Champion lubricants are required to maintain the extended warranty period.



# Advantage

## 5-25 HP RECIPROCATING COMPRESSORS

| MOTOR HP | TANK CAPACITY GAL. | ADVANTAGE MODEL | DIMENSIONS L x W x H INCHES | APPROX. SHIP WEIGHT LBS. | 175 PSI RATING |           |
|----------|--------------------|-----------------|-----------------------------|--------------------------|----------------|-----------|
|          |                    |                 |                             |                          | RPM            | CFM DEL'Y |
| 5        | 80                 | VR5-8           | 35 x 27 x 75                | 590                      | 737            | 17.0      |
| 5 (x2)   | 120                | HR5D-12         | 75 x 33 x 54                | 980                      | 737            | 34.0      |
| 7.5      | 80                 | VR7F-8          | 31 x 24 x 75                | 630                      | 949            | 22.3      |
| 7.5 (x2) | 120                | HR7D-12         | 83 x 34 x 54                | 1305                     | 570            | 51.2      |
| 10       | 120                | HR10-12         | 71 x 32 x 55                | 895                      | 718            | 33.8      |
| 10       | 120                | VR10-12         | 43 x 30 x 81                | 895                      | 718            | 33.8      |
| 10 (x2)  | 240                | HR10D-24        | 88 x 38 x 61                | 2325                     | 718            | 67.6      |
| 15       | 120                | HR15-12         | 73 x 36 x 62                | 1210                     | 776            | 54.1      |
| 25       | 120                | HR25-12         | 74 x 36 x 65                | 1597                     | 776            | 90.7      |

## Sales & Service Distributors Across America

### An Extensive Network

Your sales, service and technical support needs will be handled quickly and easily by our extensive network of Champion factory-trained, authorized local distributors. Maintaining and adequately servicing your compressor has never been easier.

Over **1,100** Champion distributors ready to provide solutions to all your compressed air needs

To find a distributor visit:  
[www.championpneumatic.com](http://www.championpneumatic.com)



Champion is committed to  
delivering **superior products** built with  
the **exceptional standards** you expect.



**CHAMPION**<sup>®</sup>

1301 North Euclid Avenue  
Princeton, IL 61356  
[www.ChampionPneumatic.com](http://www.ChampionPneumatic.com)



Product specifications and materials are subject to change without notice.

©2024 Industrial Technologies and Services, LLC  
Printed in U.S.A.  
CR-ADV-PROG 5th Ed. 5/24

Please recycle after use.